

HPRERASHI2025123/P

# HARMONIOUS LIVING IN THE HILLS

---



## HAZELWOOD

by ROSERÓ

A VENTURE OF CHAIL HEIGHTS

---

# Elegance Elevated to the Hills

Embraced by the tranquil grandeur of Chail's mountains, Hazelwood by Rosero embodies serenity woven with sophistication, where each sunrise unveils a poetic calm and nature's stillness meets refined indulgence. Offering 162 exquisite units across 5 towers on 3.5 acres, including 82 Studio apartments of 707 sq. ft. and 80 1BHKs of 855 sq. ft., it blends luxurious hill-side living with a secure, high-yield investment opportunity.



# Spaces Designed for Inspired Living

---

- 🌿 Landscaped Green Area
- 🌿 Meditation & Recreation Zone
- 🌿 Grocery & Commercial Facilities
- 🌿 All Weather Swimming Pool
- 🌿 Indoor Games Arena
- 🌿 Tennis & Squash Courts
- 🌿 Fitness Gymnasium
- 🌿 Salon & Chemist
- 🌿 Rooftop Lounge
- 🌿 Restaurant
- 🌿 Party Hall



# Studio and 1 BHK Apartments in Hills

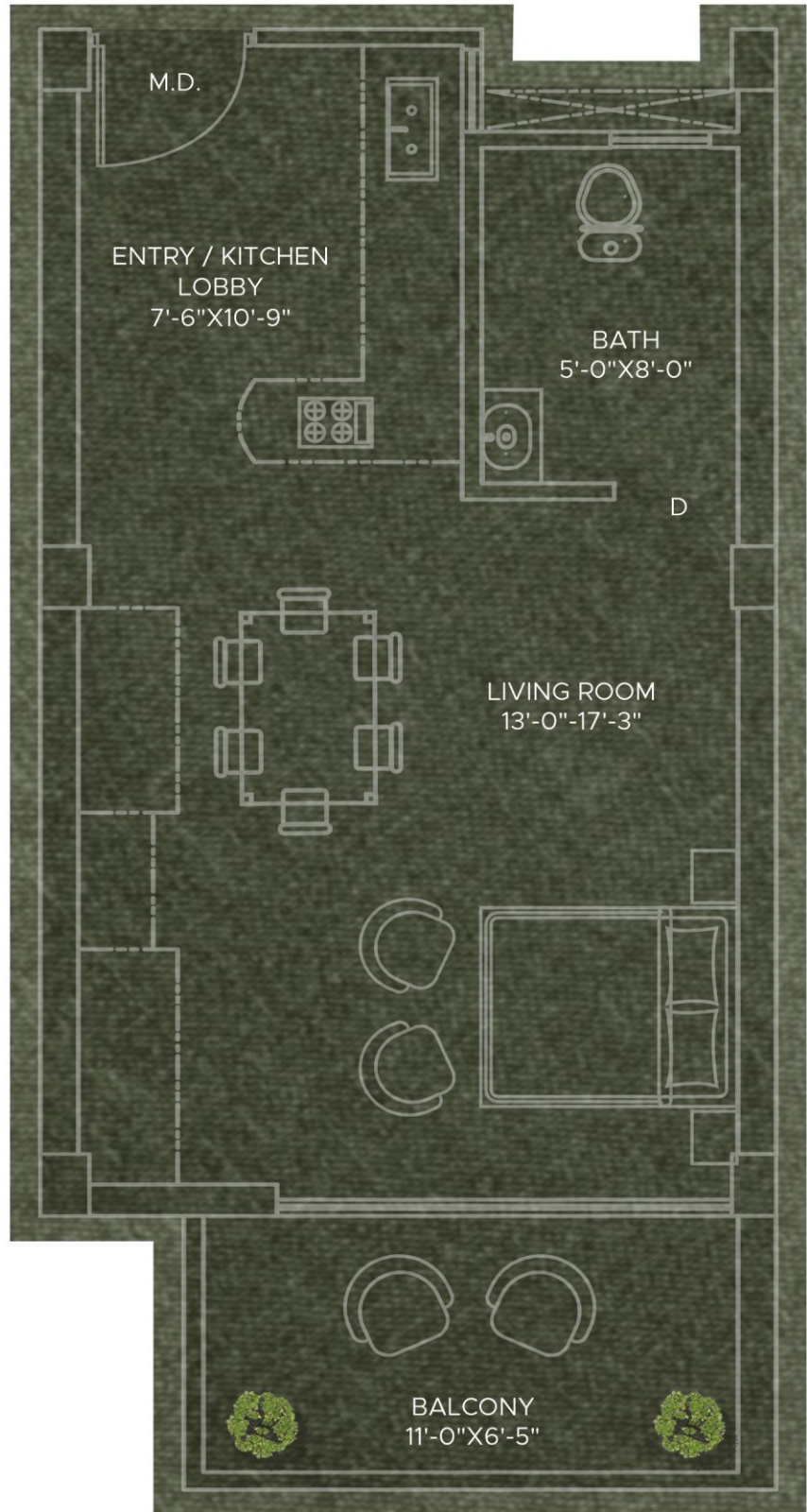
---

Set in the tranquil hills of Chail, these Studio and 1 BHK apartments combine elegance with practicality. Sunlit interiors, spacious layouts, and premium finishes create a sophisticated living experience. Residents enjoy exclusive amenities including a clubhouse, swimming pool, gym, rooftop lounge, and meditation area, offering serene and elevated hill living.



# Studio Apartment

707 SQ. FT.



## Specifications



### ROOM

Roof  
Door  
Window  
Flooring  
Walls

False Ceiling with Lighting  
Flush Door with Premium Finish  
UPVC Sliding Windows  
Premium Vitrified Tiles  
Superior Quality Emulsion Paint



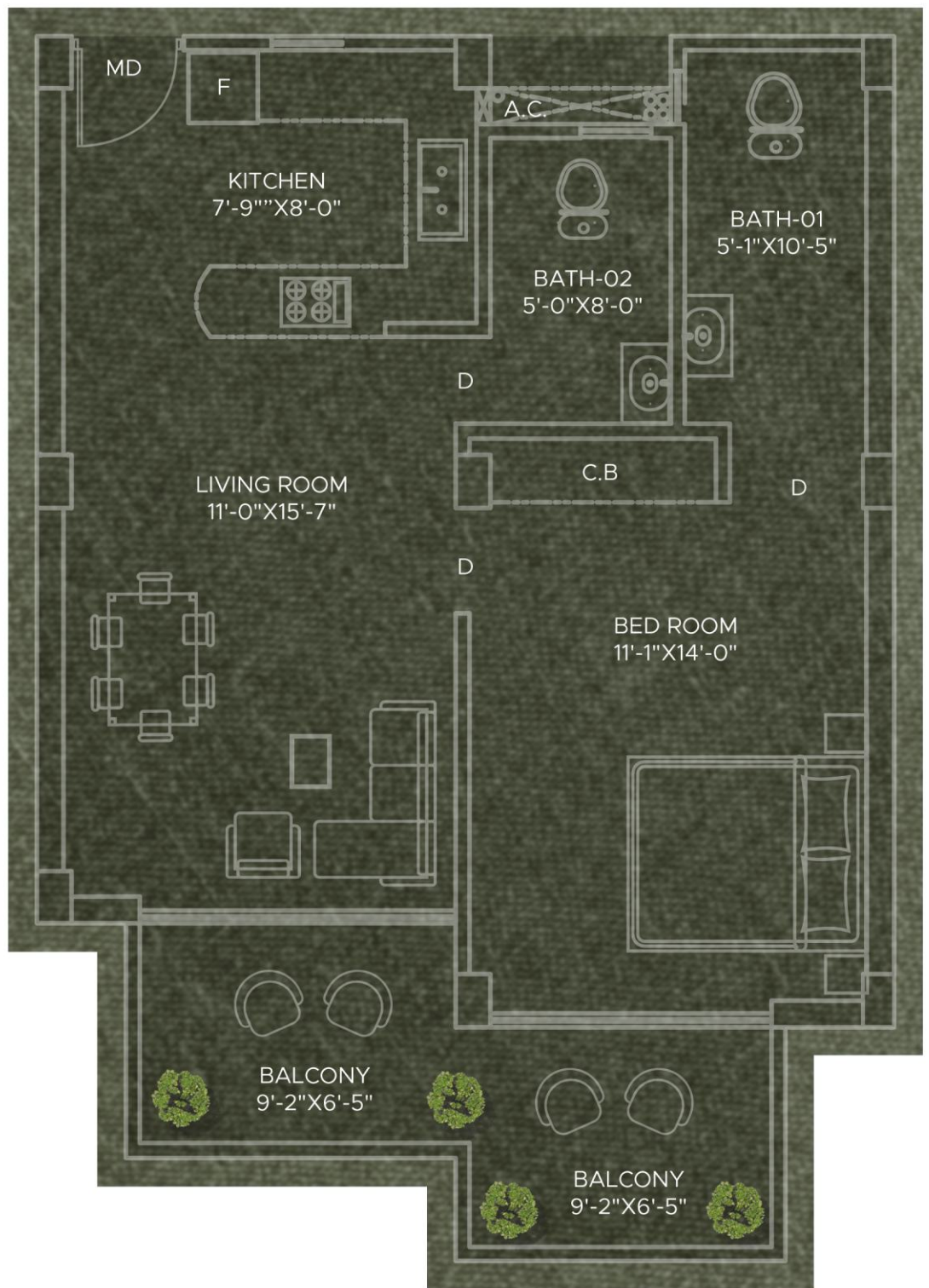
### WASHROOM

Walls  
Door  
Flooring  
Fittings

Premium Tiles on Wall  
Flush Door with Premium Finish  
Anti-Skid Premium Quality Tiles  
High-Quality Branded Fittings

# 1 BHK Apartment

855 SQ. FT.



## MODULAR KITCHEN

Flooring	Premium Vitrified Tiles
Fittings	Innotech Kitchen Cabinet
Fixtures	C.P Fitting, SS Sink
Counter	Marble / Granite
Supply	Hot & Cold Water Supply Line

## STRUCTURE & SAFETY

Earthquake Resistant RCC Technology  
Crack Free, No Leakage, No Seepage and Log Maintenance



# Nature, Adventure, and Beyond

Connected via the Chail–Solán Highway, this serene hill enclave offers effortless access while immersing residents in the pristine forests and crisp mountain air. Perfectly blending convenience with nature, Hazelwood by Rosero ensures that tranquility is never far from accessibility.



## **Chail Palace**

Explore regal architecture and scenic vistas of the surrounding mountains.



## **Chail Cricket Ground**

Visit Asia's highest cricket ground and enjoy peaceful walks.



## **Sidh Baba Ka Mandir**

A spiritual retreat amidst lush greenery for meditation and reflection.



## **Kali Ka Tibba**

Hike to this hilltop temple offering panoramic views of Chail.



## **Chail Wildlife Sanctuary**

Spot diverse flora and fauna while enjoying nature trails.



# Location Map

## Your Path to Ease



### MILESTONES

- Chail Wildlife Sanctuary 63 KM
- Kali Ka Tibba 7 KM
- Sidh Baba Ka Mandir 5 KM
- Kufri 30 KM
- Chail Cricket Ground 2 KM
- Sadhupul 19 KM
- Junga Palace 20 KM
- Stone Kumba Shiva Temple 8 KM

- Shimla Airport 60 KM
- Chandigarh Airport 117 KM
- Shimla (HP SH 1) 28 KM
- Sirmour Solan (HP SH 2) 78 KM
- Hamirpur Kangra (HP SH 39) 59 KM
- Shimla 46 KM



Site Address : Deotla Road, Near Chail Bus Stand, Himachal Pradesh,  
Pincode - 173217 | [www.roserogroup.in](http://www.roserogroup.in) | M : +91 9505471000

**Disclaimer:** information, images or sketches shown in this representation are indicative only and are architect's impression of the envisaged developments and the same are subject to change as may be necessary at the time of construction.